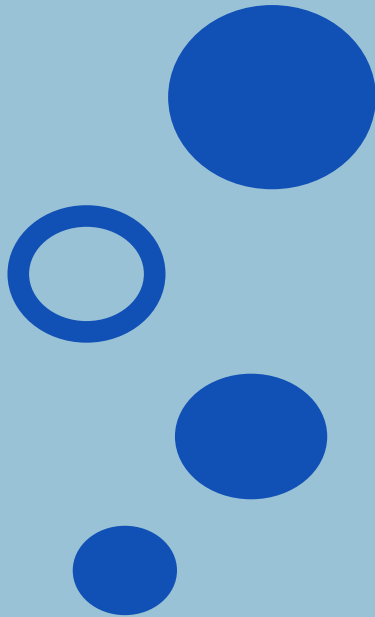




**Maa Shakti Charitable Trust  
Performance Report  
31 March 2020**



**IBBZ Accounting Ltd  
Chartered Accountant**

**301-P Botany Road,  
Botany, Auckland  
Phone: 09 2728050  
Email: [info@ibbz.co.nz](mailto:info@ibbz.co.nz)  
[www.ibbz.co.nz](http://www.ibbz.co.nz)**



# Contents

- 3    Compilation Report
- 4    Entity Information
- 5    Approval of Financial Report
- 6    Statement of Service Performance
- 7    Statement of Receipts and Payments
- 8    Statement of Resources and Commitments
- 10   Statement of Accounting Policies
- 11   Notes to the Performance Report

# Compilation Report

## Maa Shakti Charitable Trust For the year ended 31 March 2020 Cash Basis

Compilation Report to the Directors of Maa Shakti Charitable Trust.

### Scope

On the basis of information provided and in accordance with Service Engagement Standard 2 Compilation of Financial Information, we have compiled the financial statements of Maa Shakti Charitable Trust for the year ended 31 March 2019.

These statements have been prepared in accordance with the accounting policies described in the Notes to these financial statements.

### Responsibilities

The Trustees are solely responsible for the information contained in this financial report and have determined that the accounting policies used are appropriate to meet your needs and for the purpose that the financial statements were prepared.

The financial statements were prepared exclusively for your benefit. We do not accept responsibility to any other person for the contents of the financial statements.

### No Audit or Review Engagement Undertaken

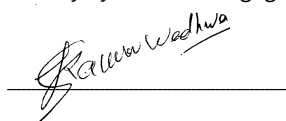
Our procedures use accounting expertise to undertake the compilation of the financial statements from information you provided. Our procedures do not include verification or validation procedures. No audit or review engagement has been performed and accordingly no assurance is expressed.

### Independence

We have no involvement with Maa Shakti Charitable Trust other than for the preparation of financial statements and management reports and offering advice based on the financial information provided.

### Disclaimer

We have compiled these financial statements based on information provided which has not been subject to an audit or review engagement. Accordingly, we do not accept any responsibility for the reliability, accuracy or completeness of the compiled financial information contained in the financial statements. Nor do we accept any liability of any kind whatsoever, including liability by reason of negligence, to any person for losses incurred as a result of placing reliance on this financial report.



Saurav Wadhwa MBus(Tax) PGCert(Law) CA CPA

Managing Director

IBBZ Accounting Ltd

301-P Botany Road, Botany Downs,

Auckland, New Zealand

Dated: 24 June 2019

# Entity Information

## Maa Shakti Charitable Trust For the year ended 31 March 2020 Cash Basis

### Legal Name of Entity

Maa Shakti Charitable Trust

### Entity Type and Legal Basis

Maa Shakti Charitable Trust is a non-profit organisation established by a trust deed dated 03/11/2010 and subject to the Charities Act 2005.

### Registration Number

CC46091

### Entity's Purpose or Mission

The purposes and objects of the Trust is to facilitate social, cultural and religious activities that enhance quality of life of the people of New Zealand. Maa Shakti Charitable Trust also helps new migrants from overseas in settling in New Zealand and educate people for a drug free and violence free society.

### Main Sources of Entity's Cash and Resources

Donation and grant

### Main Methods Used by Entity to Raise Funds

Providing of religious services

### Physical Address

4/3 Onslow Ave, Papatoetoe, Manukau City, Auckland, New Zealand, 2104

### Postal Address

4/3 Onslow Ave, Papatoetoe, Manukau City, Auckland, New Zealand, 2104

# Approval of Financial Report

Maa Shakti Charitable Trust  
For the year ended 31 March 2020  
Cash Basis

The Trustees are pleased to present the approved financial report including the historical financial statements of Maa Shakti Charitable Trust for the year ended 31 March 2019.

APPROVED

  
Vijay Gulati  
Trustee  
Date 28/07/2020

Sunita Murti

Trustee

Date 28/07/2020

Sarika Gulati

Trustee

Date 28/07/2020

Dinesh Kumar Sharma

Trustee

Date 28/07/2020

# Statement of Service Performance

**Maa Shakti Charitable Trust**

**For the year ended 31 March 2020**

**Cash Basis**

## **Description and Quantification of the Entity's Outputs**

Mission of the temple is to promote the name of Mata Vaishno Devi in New Zealand. This temple is one of the first and only temple of Mata in New Zealand. The temple wants to ensure social, cultural and religious principles of Mata Vaishno Devi enhance life of people in New Zealand.

Last year temple celebrated many festivals attracted thousands of new visitors. For the second time in NZ the temple celebrated Dusherra festival including burning of Ravana and firework display. It was one of the main events of Auckland and attracted many visitors.

Temple has attracted new devotees on a regular basis. Temple now has a full time employee looking after regular activities of temple.

Temple is open daily and almost each evening it has a planned function, Saturday is one of the main day which attracts many visitors. Temple is running mainly on donations by visitors.

# Statement of Receipts and Payments

## Maa Shakti Charitable Trust For the year ended 31 March 2020

	NOTES	2020	2019
<b>Operating Receipts</b>			
Donations, fundraising and other similar revenue	1	146,827	125,686
Receipts from providing goods or services	1	565	-
Interest, dividends and other investment receipts	1	1	2
Other operating receipts	1	14,059	760
<b>Total Operating Receipts</b>		<b>161,453</b>	<b>126,448</b>
<b>Operating Payments</b>			
Volunteer and employee related payments	2	29,738	6,387
Payments relating to providing goods or services	2	120,807	115,413
Other operating payments	2	3,444	340
<b>Total Operating Payments</b>		<b>153,989</b>	<b>122,140</b>
<b>Operating Surplus or (Deficit)</b>		<b>7,464</b>	<b>4,308</b>
<b>Capital Receipts</b>			
<b>Receipts from sale of resources</b>			
Receipts from other assets		400	-
<b>Total Receipts from sale of resources</b>		<b>400</b>	<b>-</b>
<b>Receipts from borrowings</b>			
Receipts from loans		14,100	-
<b>Total Receipts from borrowings</b>		<b>14,100</b>	<b>-</b>
<b>Total Capital Receipts</b>		<b>14,500</b>	<b>-</b>
<b>Capital Payments</b>			
<b>Purchase of resources</b>			
Payment for property, plant and equipment		3,156	400
<b>Total Purchase of resources</b>		<b>3,156</b>	<b>400</b>
<b>Repayment of borrowings</b>			
Payments for other liabilities		5,268	3,958
<b>Total Repayment of borrowings</b>		<b>5,268</b>	<b>3,958</b>
<b>Total Capital Payments</b>		<b>8,423</b>	<b>4,358</b>
<b>Increase/(Decrease) in Bank Accounts and Cash</b>		<b>13,541</b>	<b>(50)</b>
<b>Cash Balances</b>			
Cash and cash equivalents at beginning of period		169	220
Cash and cash equivalents at end of period		13,710	169
Net change in cash for period		13,541	(50)

This statement has been prepared without conducting an audit or review engagement, and should be read in conjunction with the attached Compilation Report.

# Statement of Resources and Commitments

## Maa Shakti Charitable Trust For the year ended 31 March 2020 Cash Basis

	2020	2019
<b>Bank Accounts and Cash</b>		
Bank and cash/(bank overdraft)	13,710	169
<b>Total Bank Accounts and Cash</b>	<b>13,710</b>	<b>169</b>

	2020	2019
<b>Other Resources</b>		
<b>Non Current</b>		
Property, Plant and Equipment	28,085	26,150
<b>Other Non Current</b>		
Bond	-	400
Building fit-out	11,678	10,457
<b>Total Other Non Current</b>	<b>11,678</b>	<b>10,857</b>
<b>Total Non Current</b>	<b>39,762</b>	<b>37,007</b>
<b>Total Other Resources</b>	<b>39,762</b>	<b>37,007</b>

	2020	2019
<b>Commitments</b>		
<b>Current</b>		
<b>Creditors and Accrued Expenses</b>		
Goods and services tax	(4,209)	-
<b>Total Creditors and Accrued Expenses</b>	<b>(4,209)</b>	<b>-</b>
<b>Employee Cost Payable</b>		
PAYE	755	(340)
<b>Total Employee Cost Payable</b>	<b>755</b>	<b>(340)</b>
<b>Employee entitlement</b>		
Wage Subsidy	14,059	-
<b>Total Employee entitlement</b>	<b>14,059</b>	<b>-</b>
<b>Total Current</b>	<b>10,605</b>	<b>(340)</b>
<b>Non Current</b>		
<b>Other Non Current</b>		
Loan current - SINGH J	14,100	-
Trustee advance accounts	(9,225)	(3,958)
<b>Total Other Non Current</b>	<b>4,875</b>	<b>(3,958)</b>
<b>Total Non Current</b>	<b>4,875</b>	<b>(3,958)</b>
<b>Total Commitments</b>	<b>15,480</b>	<b>(4,298)</b>

This statement has been prepared without conducting an audit or review engagement, and should be read in conjunction with the attached Compilation Report.



	2020	2019
<b>Equity</b>		
Current year earnings	(3,481)	4,647
Retained earnings/Accumulated funds	41,474	36,826
<b>Total Equity</b>	<b>37,993</b>	<b>41,474</b>

---

This statement has been prepared without conducting an audit or review engagement, and should be read in conjunction with the attached Compilation Report.

# Statement of Accounting Policies

## Maa Shakti Charitable Trust For the year ended 31 March 2020 Cash Basis

### Basis of Preparation

The entity has elected to apply PBE SFR-A (NFP) Public Benefit Entity Simple Format Reporting - Accrual (Not-For-Profit) on the basis that it does not have public accountability and has total annual expenses equal to or less than \$2,000,000. All transactions in the Performance Report are reported using the accrual basis of accounting. The Performance Report is prepared under the assumption that the entity will continue to operate in the foreseeable future.

### Goods and Services Tax (GST)

All amounts are stated exclusive of goods and services tax (GST).

### Income Tax

Maa Shakti Charitable Trust is wholly exempt from New Zealand income tax having fully complied with all statutory conditions for these exemptions.

### Bank Accounts and Cash

Bank accounts and cash in the Statement of Cash Flows comprise cash balances and bank balances (including short term deposits) with original maturities of 90 days or less.

### Changes in Accounting Policies

There was no depreciation charged on the Fixed assets.

# Notes to the Performance Report

## Maa Shakti Charitable Trust For the year ended 31 March 2020 Cash Basis

	2020	2019
<b>1. Analysis of Receipts</b>		
Donations, fundraising and other similar receipts	146,827	125,686
<b>Receipts from providing goods or services</b>		
Rental income	565	-
<b>Total Receipts from providing goods or services</b>	<b>565</b>	<b>-</b>
<b>Interest, dividends and other investment receipts</b>		
Interest income	1	2
<b>Total Interest, dividends and other investment receipts</b>	<b>1</b>	<b>2</b>
<b>Other receipts</b>		
Wage Subsidy	14,059	-
Other revenue	-	760
<b>Total Other receipts</b>	<b>14,059</b>	<b>760</b>
	2020	2019

## 2. Analysis of Payments

<b>Volunteer and employee related payments</b>		
National travel and accommodation	900	1,965
Wages and salaries	28,838	4,422
<b>Total Volunteer and employee related payments</b>	<b>29,738</b>	<b>6,387</b>
<b>Payments relating to providing goods or services</b>		
Advertising	6,297	2,185
Bank charges	321	170
Donations	650	-
Function Expenses	27,554	39,157
Insurance	1,004	646
Light and power	4,121	4,870
Office expenses	1,125	7,422
Operating expense	4,504	640
Rental and lease payments	51,792	42,264
Repairs and maintenance	3,765	5,883
Telephone and tolls	1,297	1,354
Temple Purchases- Food etc	14,141	6,779
Vehicle expenses	1,593	1,394
Waste disposal	2,641	1,885
Water expense	-	764
<b>Total Payments relating to providing goods or services</b>	<b>120,807</b>	<b>115,413</b>
<b>Other operating payments</b>		
Goods and services tax	4,209	-

PAYE	(755)	340
Other non-deductible expenses	330	-
Interest and finance charges	-	-
<b>Total Other operating payments</b>	<b>3,784</b>	<b>340</b>

2020                      2019

### 3. Capital Receipts & Payments

#### Property, Plant and Equipment

Opening Balance	26,150	26,150
Furniture and fittings	1,500	-
Plant and machinery	435	-
<b>Total Property, Plant and Equipment</b>	<b>28,085</b>	<b>26,150</b>

Other Liabilities	(9,225)	(3,958)
-------------------	---------	---------

#### Equity

Opening Balance	41,474	36,826
Current year earnings	(3,481)	4,647
<b>Total Equity</b>	<b>37,993</b>	<b>41,474</b>

2020                      2019

### 4. Breakdown of Grants

Bluesky Trust	15,304	-
Four Winds Foundation	6,000	8,250
Pub Charity	-	10,000
Lion Foundation	4,000	10,000
Grassroots T	-	20,400
Trillian	10,000	8,000
Foundation North	5,000	-
<b>Total Breakdown of Grants</b>	<b>40,304</b>	<b>56,650</b>